

Embroidery on Velvet

Rich, luxurious velvet can be a lovely match for embroidery! Read on to discover tips and tricks to make your stitching look beautiful -- and avoid crushing this delicate fabric.

Products Used

Baroque Butterfly (Embossed) (Sku: ESP12478-1)

Steps To Complete

Gather your supplies:



Embroidery design - we're using the

[Baroque Butterfly \(Embossed\)](#)

Printed template of embroidery design for placement ([here's how to print templates](#))

Velvet fabric

Matching thread

Temporary spray adhesive

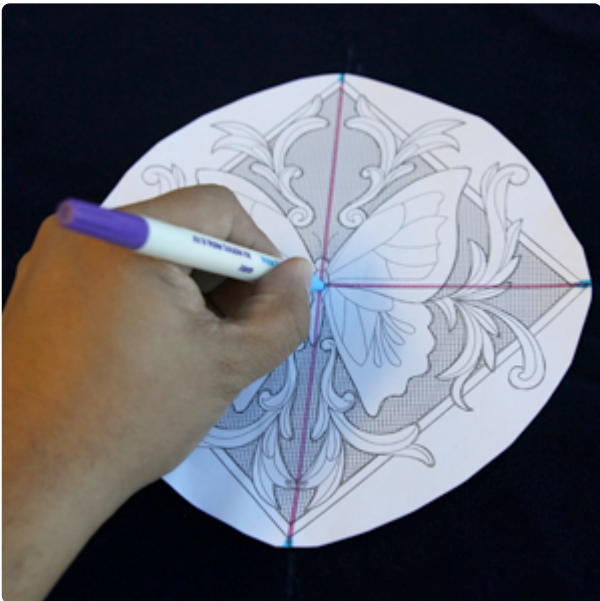
Medium weight cutaway stabilizer

Water-soluble stabilizer for topping

Air-erase pen

Scissors

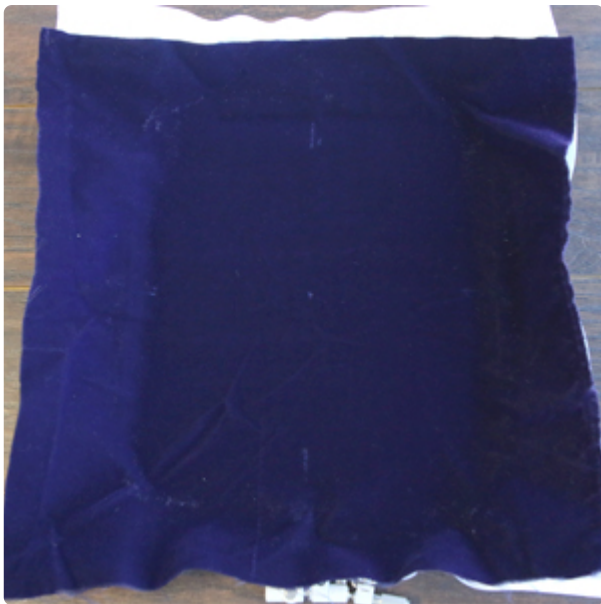
Pins



Start by positioning the printed template in the area intended for embroidery. Poke a hole in the center to mark the center of the design. Mark the horizontal and vertical axis lines and remove the template.



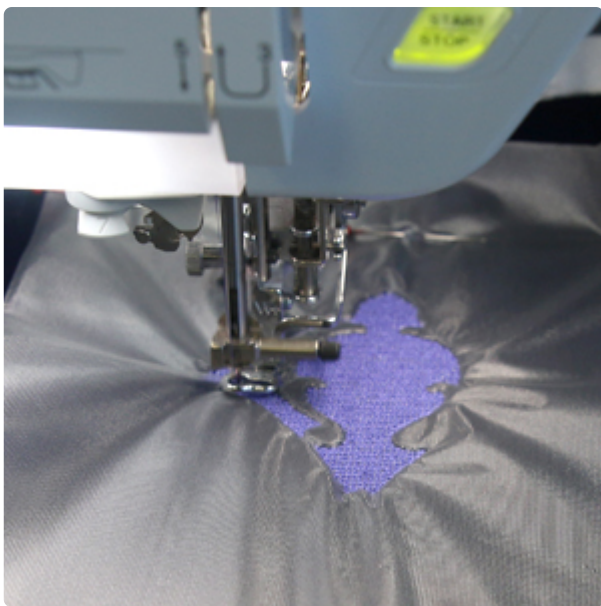
After the embroidery design has been loaded and the appropriate hoop has been selected, apply a generous amount of temporary spray adhesive to the stabilizer and hoop it (sticky side up). Make sure the stabilizer is taut and that the hoop screw is as tight as possible.



Smooth the velvet on top of the hooped stabilizer, lining up the axis lines with the marks on the hoop.



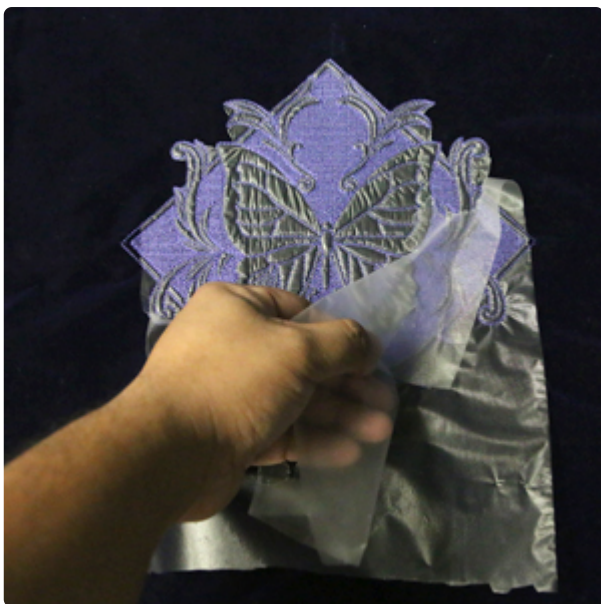
Lay a piece of lightweight water-soluble stabilizer over the velvet as a topping (this will help keep the stitches from sinking down into the nap), and pin all three layers (stabilizer, velvet and topping) together. Place the pins as close to the edge of the hoop as possible.



Attach the hoop to the embroidery machine, and stitch the design.



Once the embroidery design has completed sewing, trim loose threads and remove the excess cutaway stabilizer from the back.



Remove the water-soluble stabilizer from the front.



If any small bits of water-soluble stabilizer remain, use tweezers to remove them or simply wet your fingertips and gently brush the stabilizer away.

Note: Crushed velvet and polyester velvets are usually fine to hand-wash or machine wash; the gentle cycle is recommended.