

Double Candy Cane Holder (In-the-Hoop)

Create your own festive friends this Christmas with an in-the-hoop double candy cane holder - the candy canes are positioned to be the arms and legs! We've even added fluffy applique fabric for extra dimension and fun. Project instructions will show you how to make your own.

Supplies

Embroidery file

Small pieces of felt (for front and back)

Small piece of felt or faux fur (for applique piece)

Embroidery thread

Tear-away

stabilizer

Lightweight

water-soluble

stabilizer (need if using faux fur)

Temporary Spray

Adhesive (Gunold

KK10)

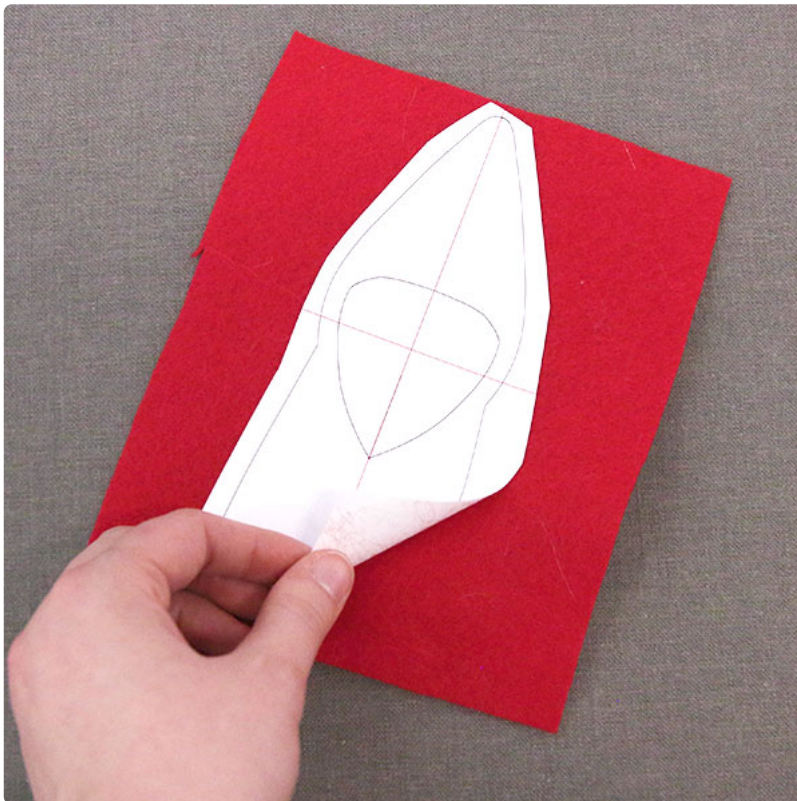


Steps To Complete





When you download an in-the-hoop candy cane holder design, you will find multiple files. Some are embroidery files, and the others are dieline files marked with the letters "DL". Dielines are used to cut the fabric to the correct shape and size. Open and print each dieline file using embroidery software. If you do not have embroidery software, take a look at our [helpful tutorial](#) on using dielines.



To start, spray the backside of the printed dieline for the front piece with a small amount of temporary adhesive. Smooth it onto a piece of felt or ultrasuede.



Cut out the shape and remove the paper. Repeat this process to cut out the back fabric piece.



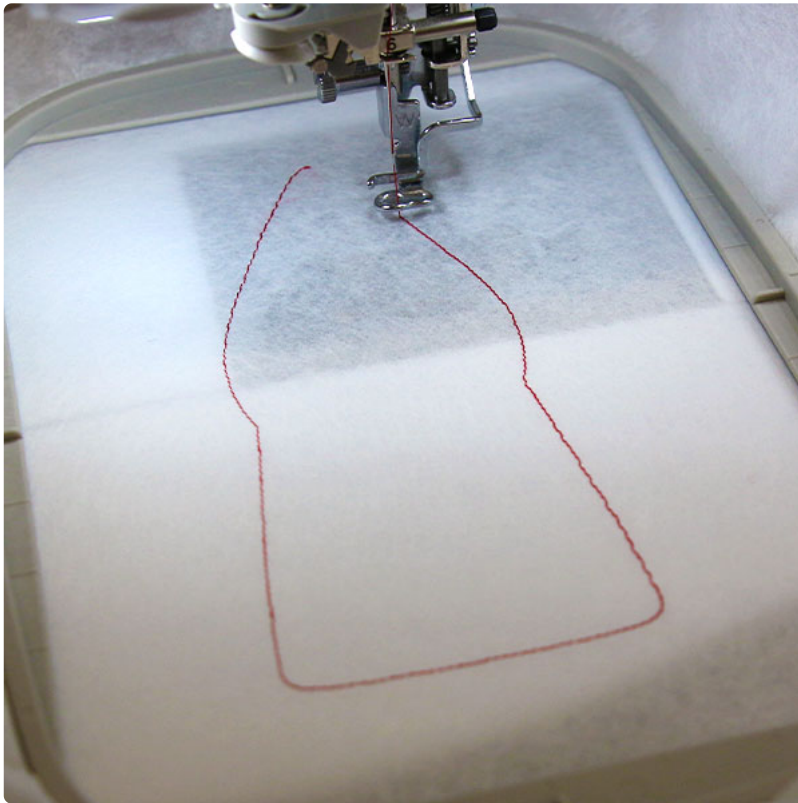
If your design has an applique piece, cut that out as well. If cutting it out of faux fur, it is easier to place the paper dieline on the back of the fabric.



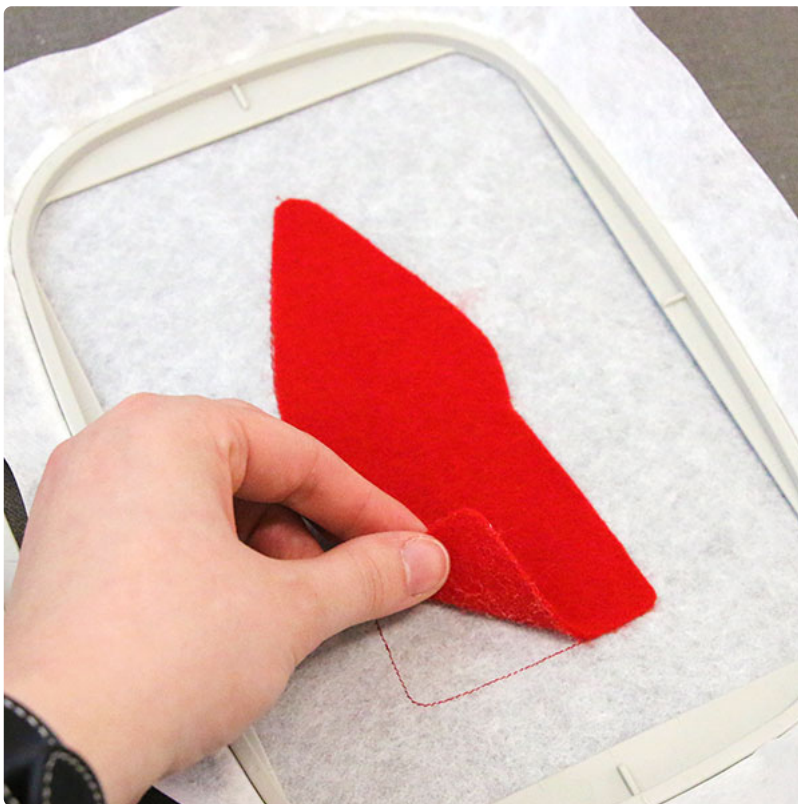
It can also be more efficient to cut out the fluffy applique shape with a craft knife instead to make it easier to leave some of the hair long and hanging past the bottom edge of the fabric.



Hoop a piece of tearaway stabilizer firmly. Make sure it is nice and tight with no wrinkles.



Attach the hoop onto the machine and load the embroidery file (not the dieline files). Use a 75/11 sharp sewing needle instead of an embroidery needle. The sharp sewing needle has a finer point, and it will make smaller perforations in the stabilizer. Then embroider the design. The first thing to embroider will be the "front piece dieline" (or outline stitch). This marks the area on the stabilizer where the fabric piece will be placed.



Remove the hoop from the machine but do not unhoop the stabilizer. Spray the back of the front fabric piece with a small amount of temporary adhesive. Place the fabric inside the sewn outline.



Attach the hoop back onto the machine and continue with the design. A tackdown will sew next. This holds the front fabric in place for the remainder of the design.



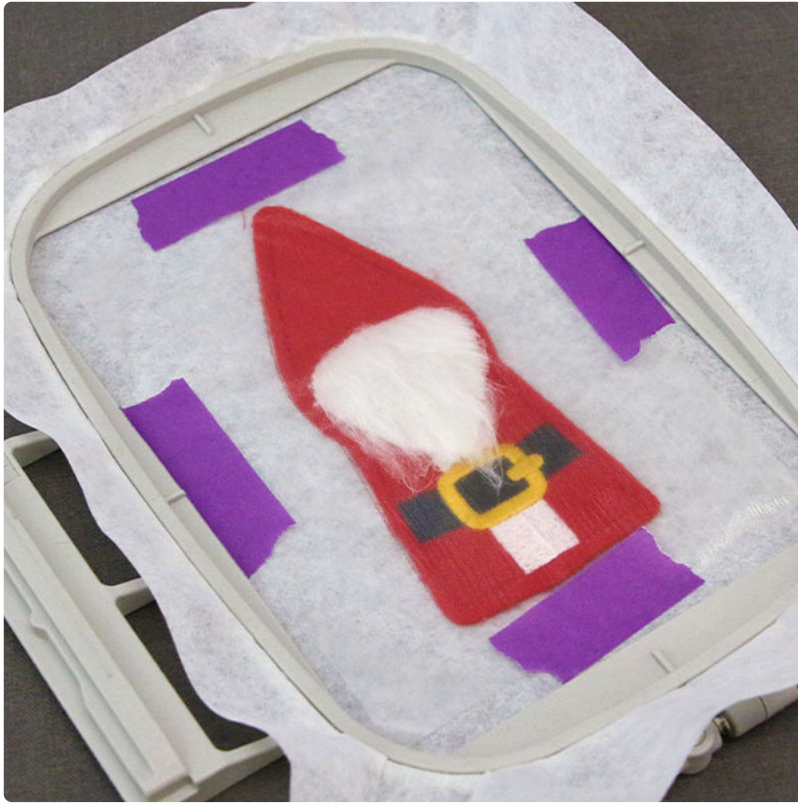
Then all of the inside details will begin to be embroidered. If your design does not have an applique piece, stop the embroidery machine before sewing the "back piece tackdown" and skip ahead to the step about placing the ribbon hanger below. If your design has an applique piece, move onto the next step after you've sewn the dieline for that fabric piece.



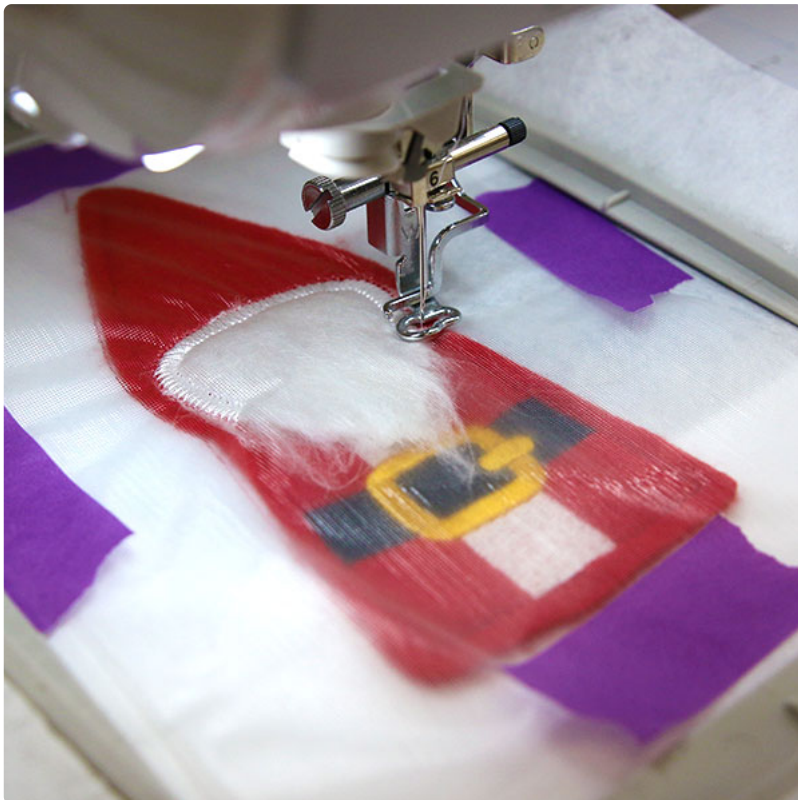
If your design has an applique piece, follow the color change piece to embroider the dieline shape for that fabric piece.



Then spray the back side of the applique piece with temporary adhesive, and place it on top of the front fabric piece inside of the sewn dieline shape.



If your applique piece is using faux fur or another textured fabric, cut a piece of lightweight water-soluble stabilizer (such as sulky solvy) that is larger than the whole design. Lay it over the fabric piece, and make sure the faux fur is laying nicely. Then tape the stabilizer topping to the hoop or stabilizer.



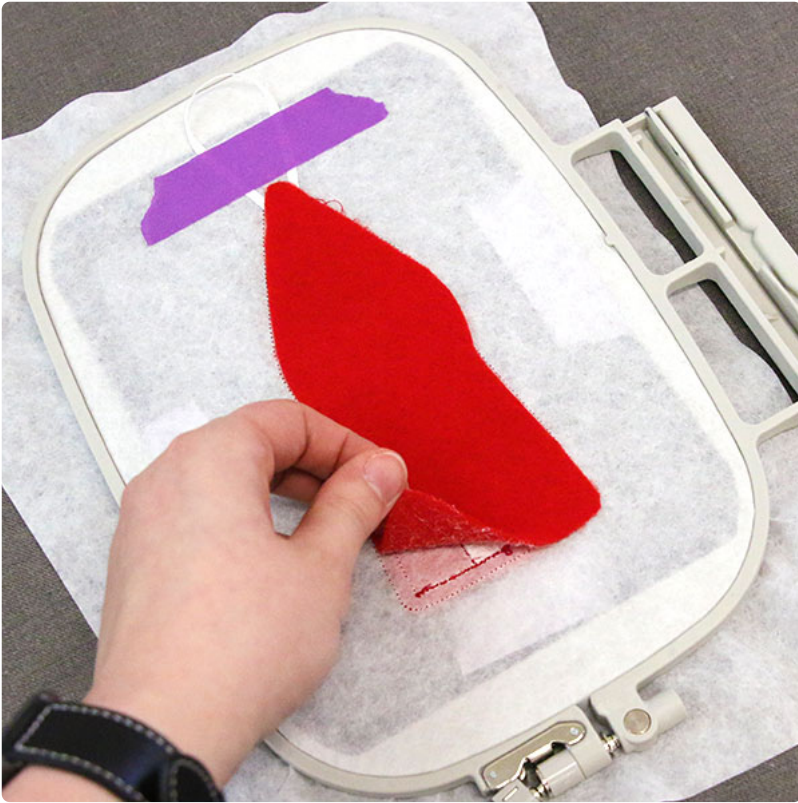
Place the hoop on the machine and embroider the tackdown for the applique piece.



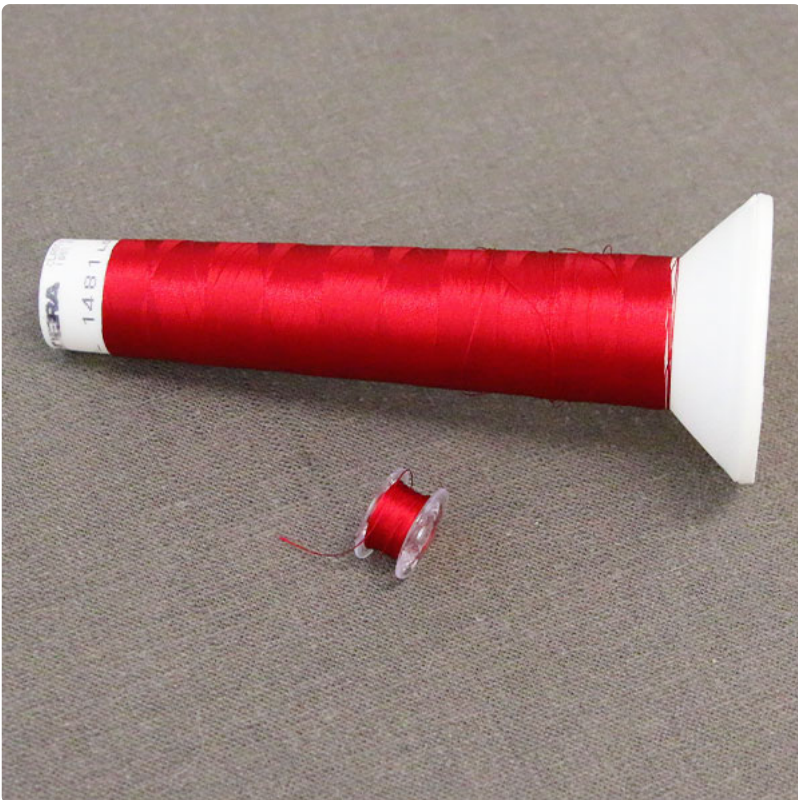
If your design has any inner details before the "back piece tackdown," embroider those now. Follow the color sheet closely, and make sure to stop before embroidering the "back piece tackdown".



Before sewing the "back piece tackdown", stop the embroidery, and remove the hoop from the machine but do not unhoop the stabilizer. Flip the hoop over so that the backside is facing up. To make a hanger, cut a piece of ribbon to 7"-8" long. Form the ribbon into a loop and tape it in place on the backside of the back fabric piece. Make sure to center it along the top edge.



Spray the backside of the back fabric piece with adhesive, and place it inside the shape on the backside of the embroidery.



Since both sides of the remaining embroidery will be seen, wind a bobbin with the same thread used in the needle.



Attach the hoop back to the machine and continue embroidering the design. A tackdown and the final border will sew around the outer edge of the fabric. This binds all the layers together.



Once the embroidery is finished, remove the hoop from the machine. Unhoop the stabilizer, and carefully tear the excess stabilizer away. Also remove the water-soluble stabilizer if you used it.



Slide two candy canes into the holders to create the arms and legs. Use small candy canes for the smaller size of the designs, and standard candy canes for the larger size of the designs.